

◆ Product Intro

AfMc Series

Mono crystalline Solar Module 530W~550W

Quality guaranteed
 1.Linear output power guaranteed
 2.10 years product warranty
 3.25 years linear power output

◆ MODULE CHARACTERISTICS

Models	GEP-AfMc540MH	GEP-AfMc545MH	GEP-AfMc550MH
Maximum Power (Pmax)	540W±3%	545W±3%	550W±3%
Positive Power Selection	0/+5W	0/+5W	0/+5W
Maximum Power Voltage (Vmp)	41.65V	41.8V	41.95V
Maximum Power Current(Imp)	12.97A	13.04A	13.11A
Open Circuit Voltage (Voc)	49.5V±3%	49.65V±3%	49.8V±3%
Short Circuit Current (Isc)	13.85A±3%	13.92A±3%	13.99A±3%
Module Efficiency	20.9%	21.1%	21.3%
Operating module Temperature	- 40 °C ~ +85 °C		
Maximum system(DC) Voltage	DC1500V(IEC)		
Maximum Series Fuse Rating	25A		
Nominal Module Operating Temperature	42±2 °C		
Temperature Coefficients of Pmax	- 0.36%/°C		
Temperature Coefficients of Voc	- 0.304%/°C		
Temperature Coefficients of Isc	+ 0.050%/°C		
Fire Rating	Class C		

◆ MECHANICAL CHARACTERISTICS

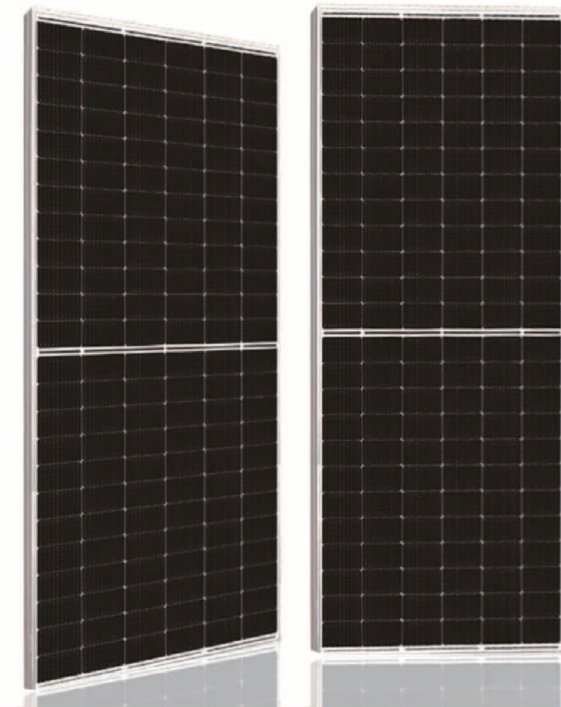
Solar Cell	Mono crystalline 182×91mm 10BB
Number of cells	144(6×24)
Dimensions	2279×1134×35mm (89.72×44.65×1.38inches)
Weight	27.2Kg (59.97lbs)
Front Glass	3.2mm (0.13inches)front glass
Frame	Anodized aluminum alloy
Junction Box	IP68 rated
Cable	4mm ² solar cable 300mm (11.81inches)Customized Length
Connector	PV-XT101.1/Z4S-abcde

◆ PACKING

	20GP	40HC
Pieces per pallet	31	31
pallets per container	5	20
Pieces per container	155	620

STC: irradiance 1000 W/m², module temperature 25°C, AM=1.5;Tolerance of Pmax is within +/- 3%.

Manufactured in China



High Efficiency

Advanced solar cell technology ensures the high module efficiency up to 21.3%.



Positive Power Selection

Module will generate power selection of 0 to +5W.



Strong Load Capacity

Module is capable to withstand 2400Pa wind loads and 5400Pa Snow loads.



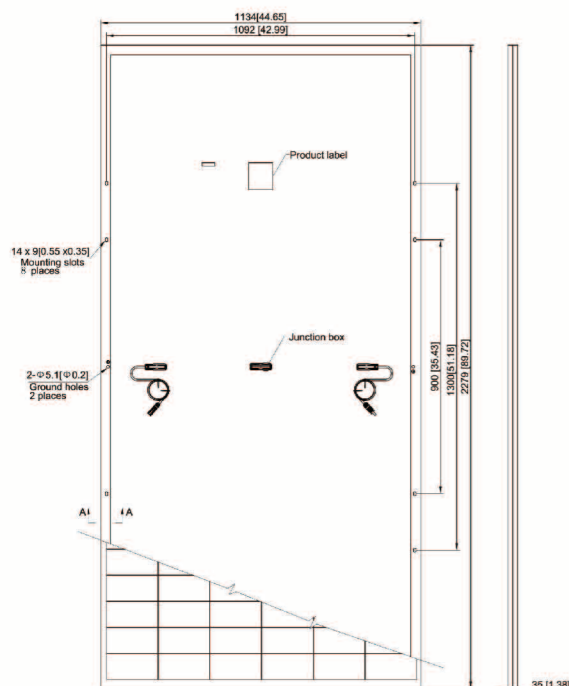
Reliable quality

Module is manufactured in accordance with international quality standards ISO9001



Higher Weatherproof Rating

J-Box performs module with an environmental protection rating to IP68.



Current-Voltage & Power-Voltage Curve (GEP-AfMc540MH)

